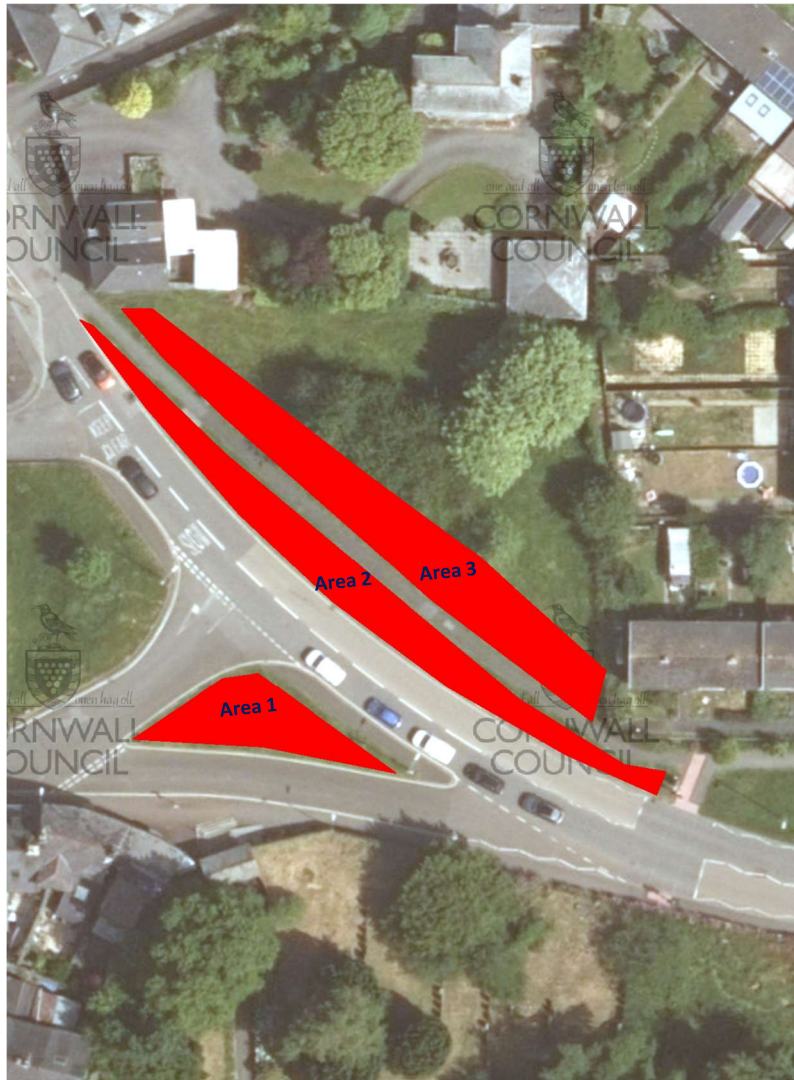


Liskeard verge plans and specifications**Specification****Liskeard Plymouth Rd****Plymouth Road (Castle Street)**

- Keep a 1m edge around the verge
- Clear vegetation back to the footway edge

Area 1 -

Covering an area of approx. 112 square metres

Area 2 -

Covering an area approx. 231 square metres

Area 3 -

Covering an area approx. 329 square metres

All Areas-

Cut and remove arisings during the autumn

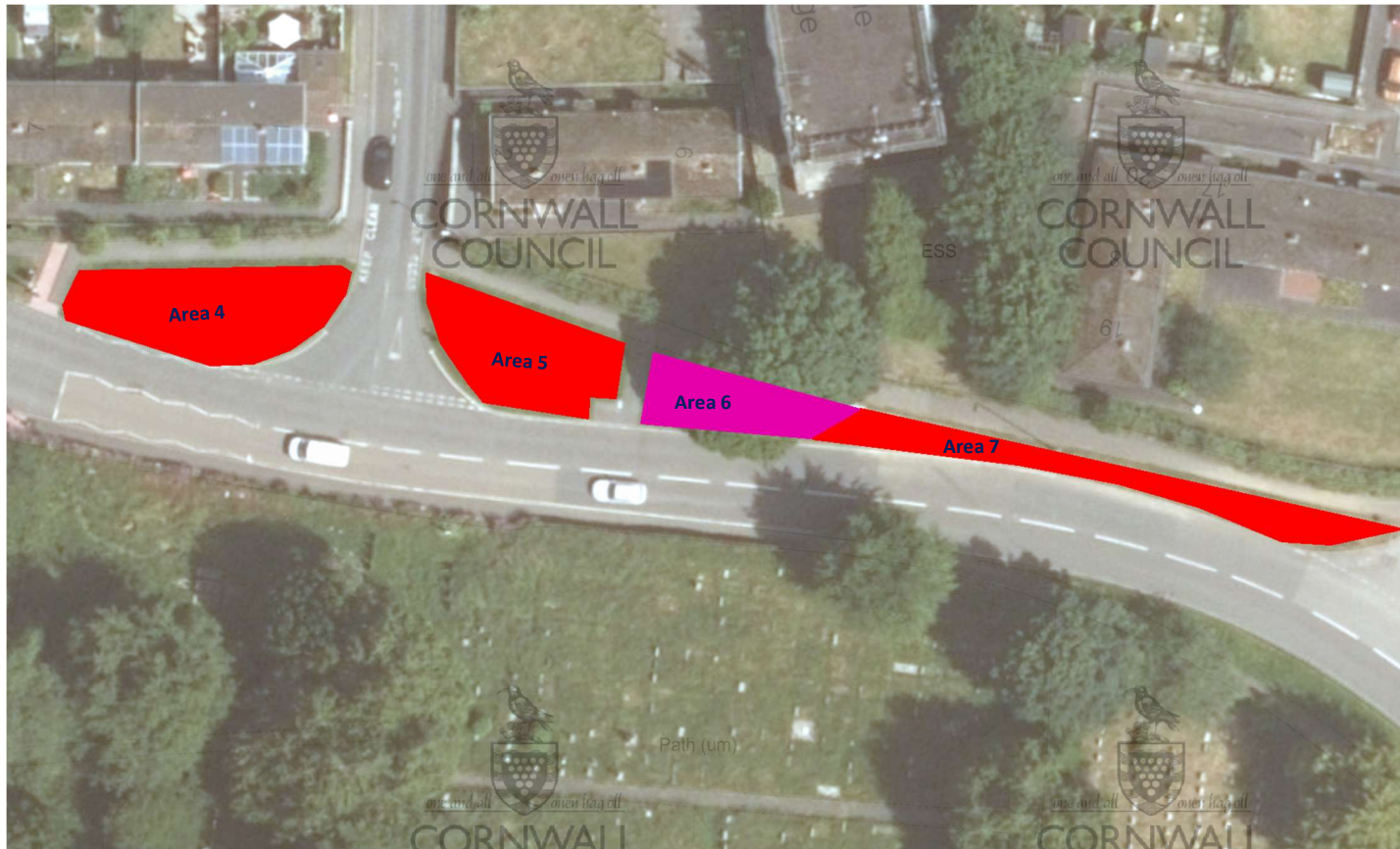
Scarify the area to remove thatch creating bare ground

Overseed the area with wildflower seed

Cut the area again to maintain a short grass sward

Cut and remove the arisings between February and March

Compost arisings onsite



Specification

Plymouth Road (Castle Street)

- Keep a 50cm edge around the verge
- Clear vegetation back to the footway edge

Area 4 -
Covering an area of approx. 153 square metres

Area 5 -
Covering an area approx. 117 square metres

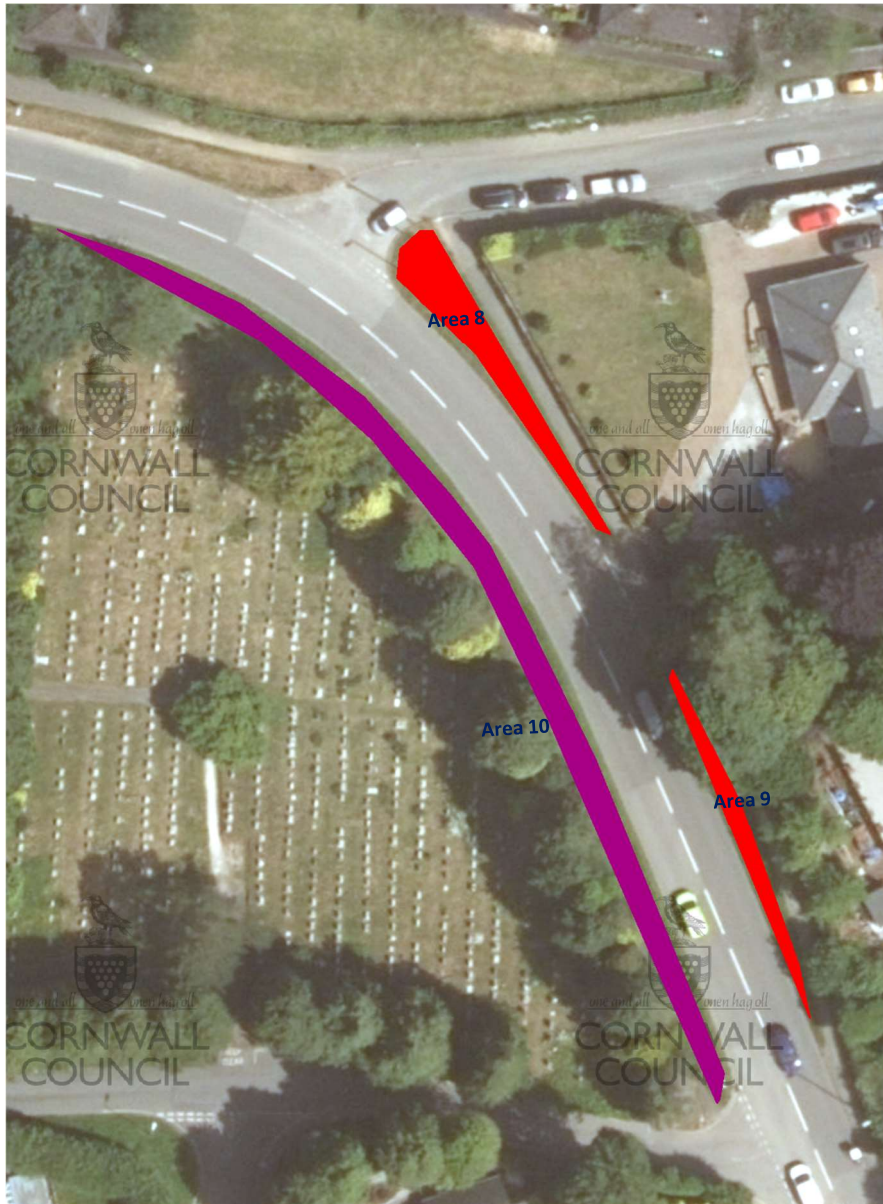
Area 3 -
Covering an area approx. 103 square metres

All Areas 4,5 & 7 -
Cut and remove arisings during the autumn
Scarify the area to remove thatch creating bare ground
Overseed the area with wildflower seed
Cut the area again to maintain a short grass sward
Cut and remove the arisings between February and March
Compost arisings offsite

Specification

Area 6 –

Cut and remove arisings during the autumn
Scarify the area to remove thatch creating bare ground
Overseed the area with wildflower seed (shade loving mix) or plant spring bulb mix



Specification

Plymouth Road (Yeomans Close)

- Keep a 50cm edge around the verge
- Clear vegetation back to the footway edge

Area 8 -

Covering an area of approx. 93 square metres

Area 9 -

Covering an area approx. 50 square metres

Area 10-

Covering an area approx. 215 square metres

Areas 8 & 9 -

Cut and remove arisings during the autumn
Scarify the area to remove thatch creating bare ground

Overseed the area with wildflower seed
Cut the area again to maintain a short grass sward

Area 10 –

Cut and remove arisings during the autumn
Scarify the area to remove thatch creating bare ground

Overseed the area with shade loving wildflower seed or spring bulb mix



Specification

Plymouth Road (Briarwood)

- Keep a 50cm edge around the verge
- Clear vegetation back to the footway edge

Area 11 -
Covering an area of approx. 13 square metres

Area 12 -
Covering an area approx. 14 square metres

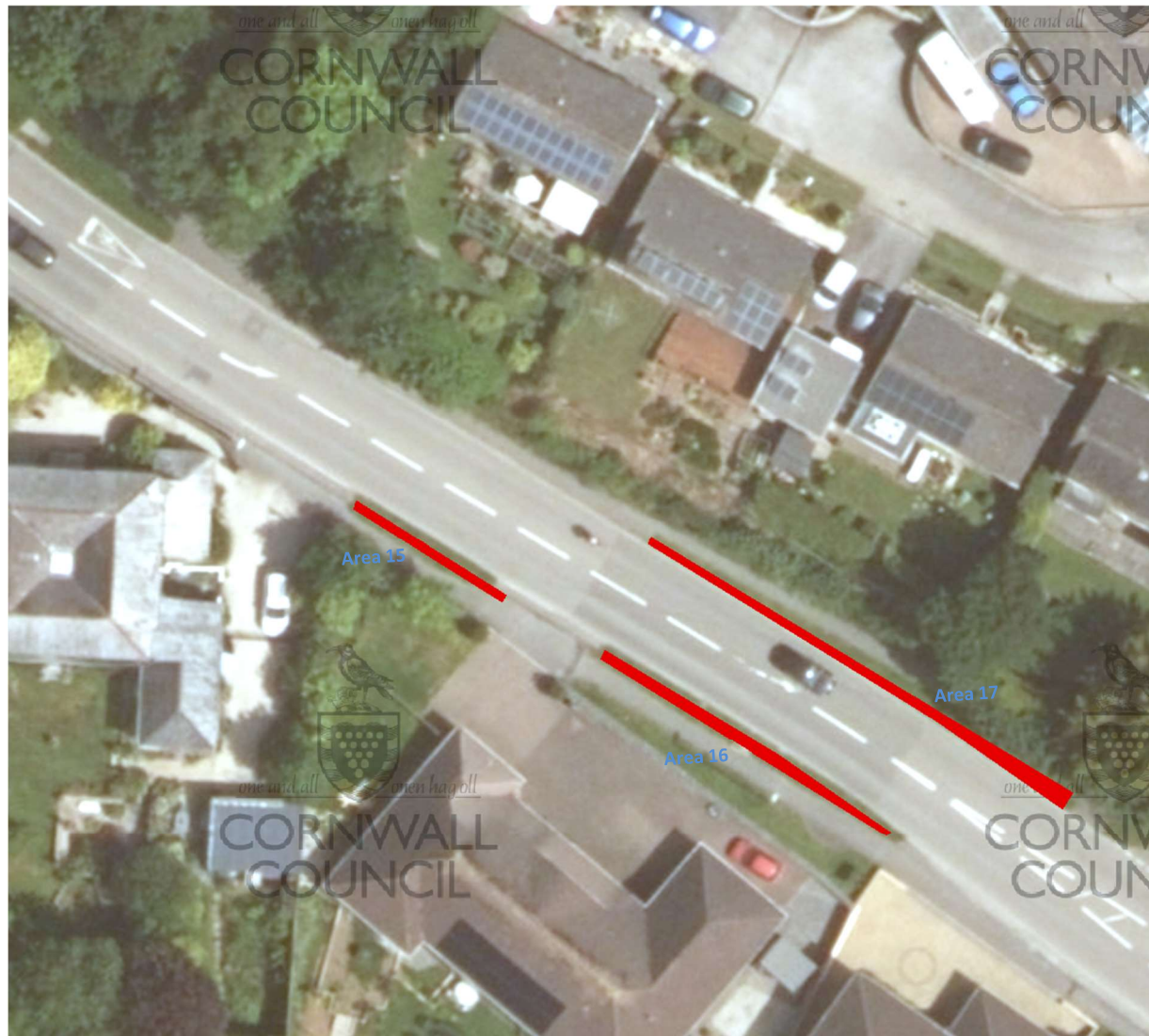
Area 13 -
Covering an area approx. 28 square metres

Area 14 –
Covering an area approx. 312 square metres

All Areas-

Cut and remove arisings during the autumn
Scarify the area to remove thatch creating bare ground

Overseed the area with wildflower seed
Cut the area again to maintain a short grass sward



Specification

Plymouth Road (Goldenbank Lodge)

- Keep a 50m edge around the verge
- Clear vegetation back to the footway edge

Area 15 -

Covering an area of approx. 9 square metres

Area 16 -

Covering an area approx. 14 square metres

Area 17 -

Covering an area approx. 30 square metres

All Areas-

Cut and remove arisings during the autumn

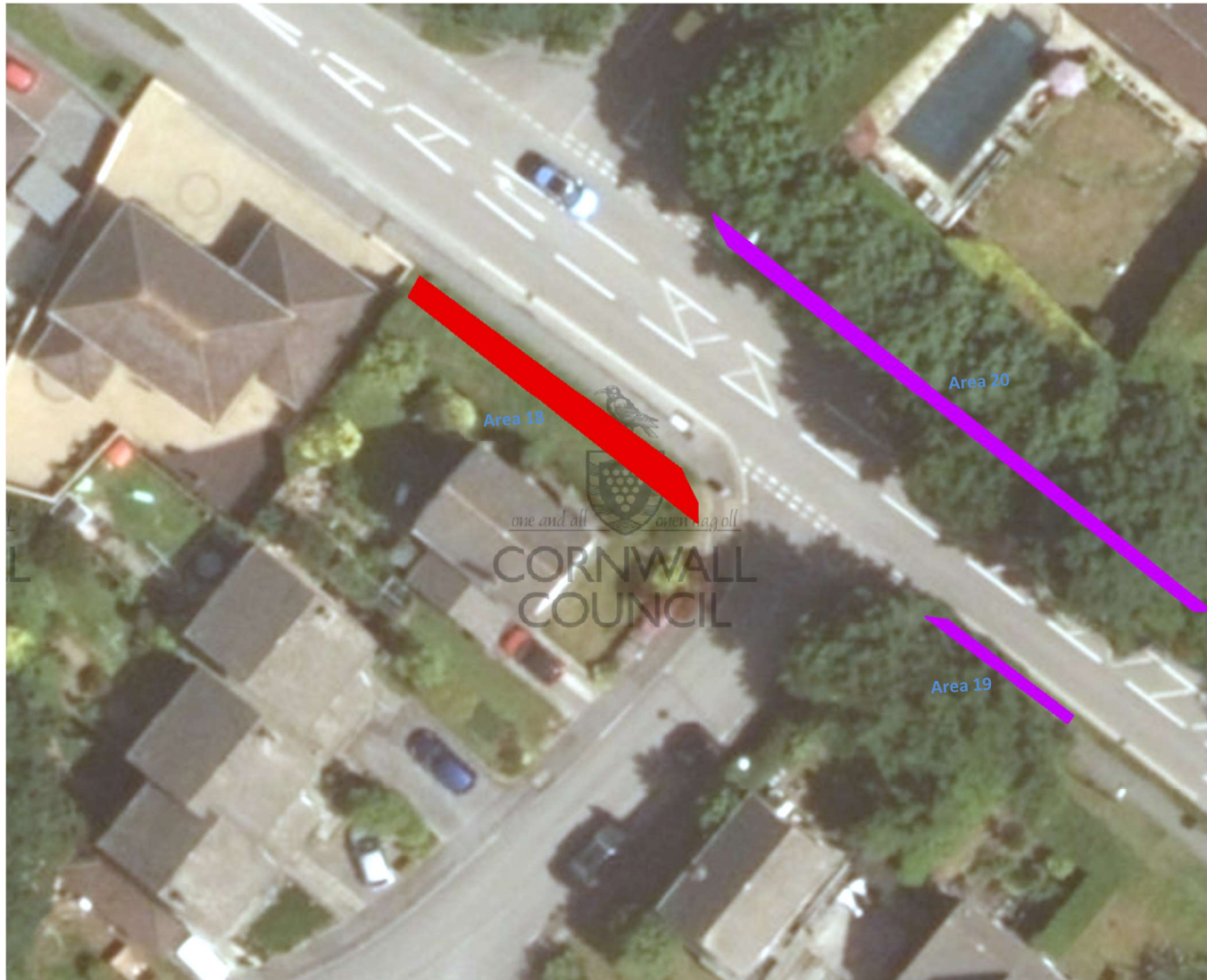
Scarify the area to remove thatch creating bare ground

Overseed the area with wildflower seed

Cut the area again to maintain a short grass sward

Cut and remove the arisings between February and March

Compost arisings offsite



Specification

Plymouth Road (Trevanion Road)

- Keep a 50cm edge around the verge
- Clear vegetation back to the footway edge

Area 18 -
Covering an area of approx. 35 square metres

Area 19 -
Covering an area approx. 8 square metres

Area 20-
Covering an area approx. 30 square metres

Area 18 -
Cut and remove arisings during the autumn
Scarify the area to remove thatch creating bare ground
Overseed the area with wildflower seed
Cut the area again to maintain a short grass sward

Area 19 & 20 –

Cut and remove arisings during the autumn
Scarify the area to remove thatch creating bare ground
Overseed the area with shade loving wildflower seed or spring bulb mix

Specification**Plymouth Road (Fairlight)**

- Keep a 50cm edge around the verge
- Clear vegetation back to the footway edge

Area 21 -

Covering an area of approx. 47 square metres

Area 22 -

Covering an area approx. 83 square metres

Area 23 -

Covering an area approx. 173 square metres

All Areas-

Cut and remove arisings during the autumn

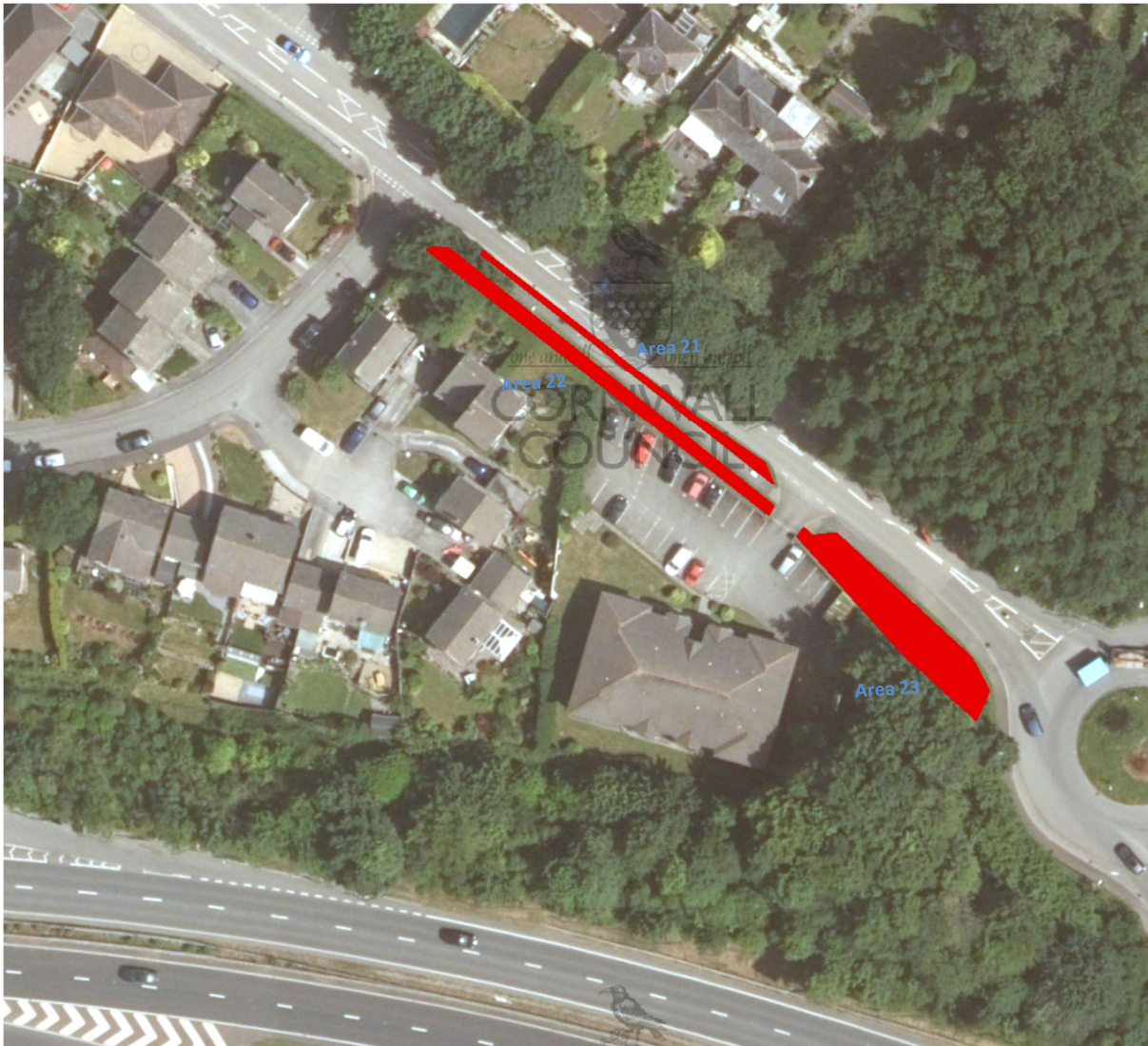
Scarify the area to remove thatch creating bare ground

Overseed the area with wildflower seed

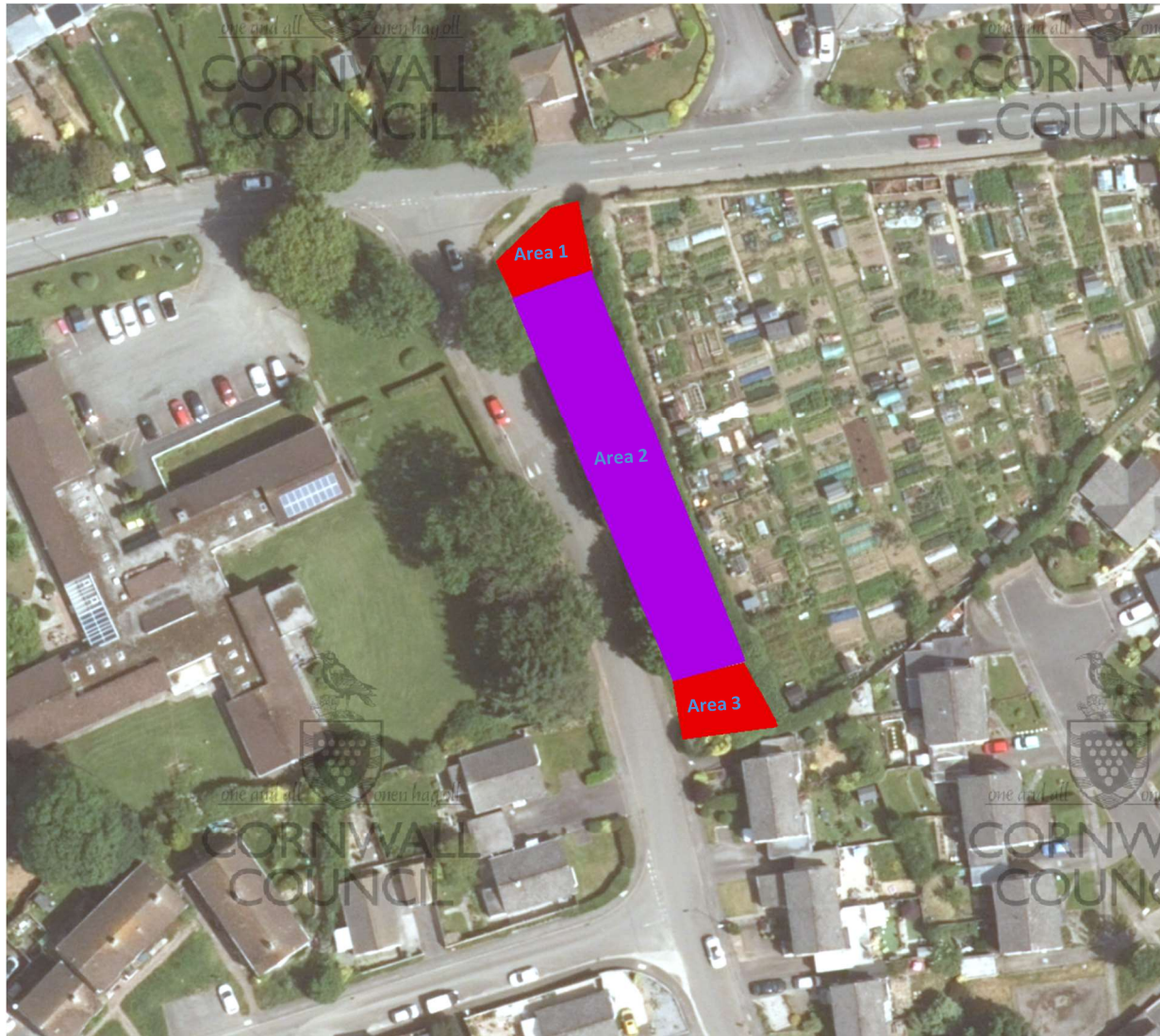
Cut the area again to maintain a short grass sward

Cut and remove the arisings between February and March

Compost arisings offsite



Liskeard – Pengover Estate

**Specification****Dennis Rd (Allotments)**

- Keep a 50cm edge around the verge
- Clear vegetation back to the footway edge

Area 1 -

Covering an area of approx. 100 square metres

Area 2 -

Covering an area approx. 602 square metres

Area 3 -

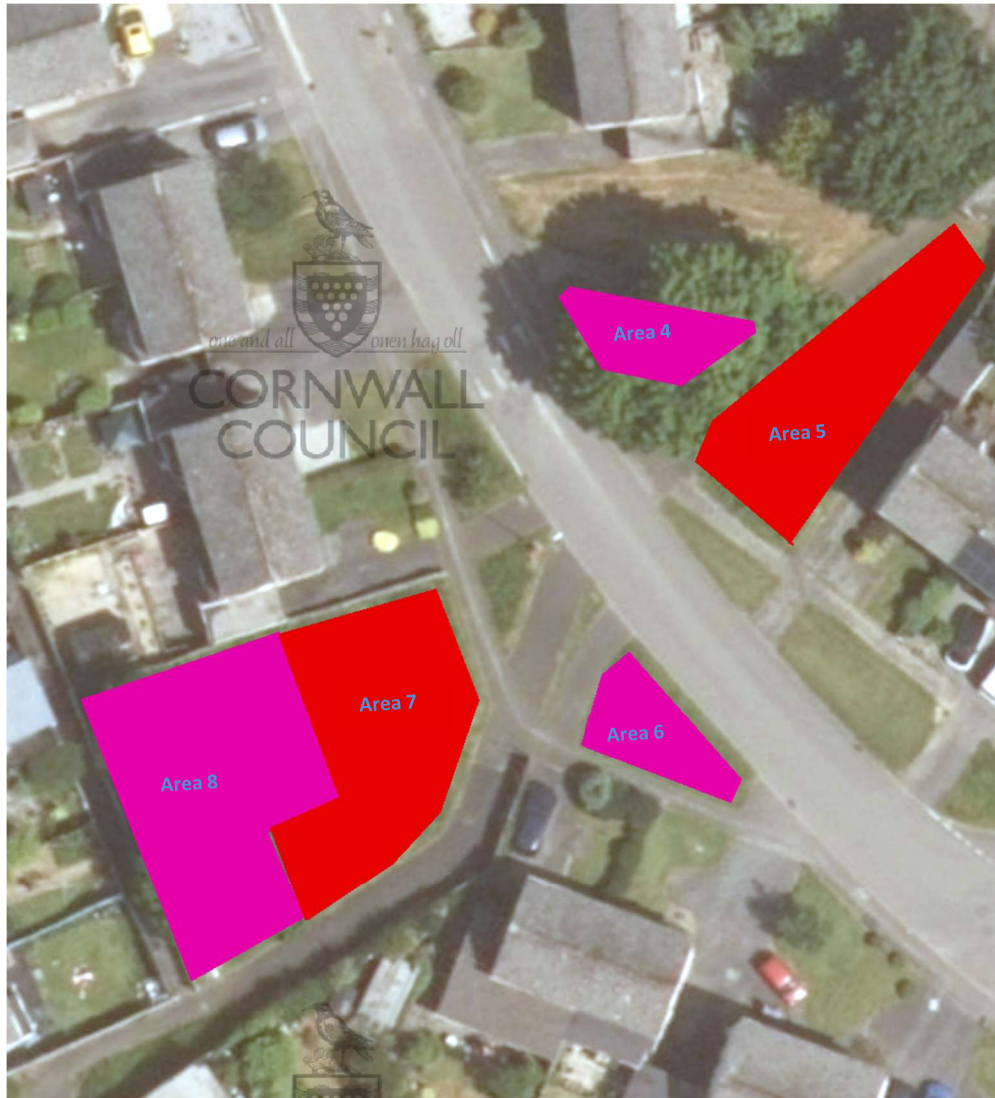
Covering an area approx. 100 square metres

Area 2 -

Cut and remove arisings during the autumn
 Scarify the area to remove thatch creating bare ground
 Overseed the area with wildflower seed
 Cut the area again to maintain a short grass sward

Areas 1 & 3 -

Cut and remove arisings during the autumn
 Scarify the area to remove thatch creating bare ground
 Overseed the area with shade loving wildflower seed
 or spring bulb mix



Specification

Dennis Rd (Footpath Greens)

- Keep a 50cm edge around the verge
- Clear vegetation back to the footway edge

Area 4 -
Covering an area of approx. 44 square metres

Area 5 -
Covering an area approx. 602 square metres

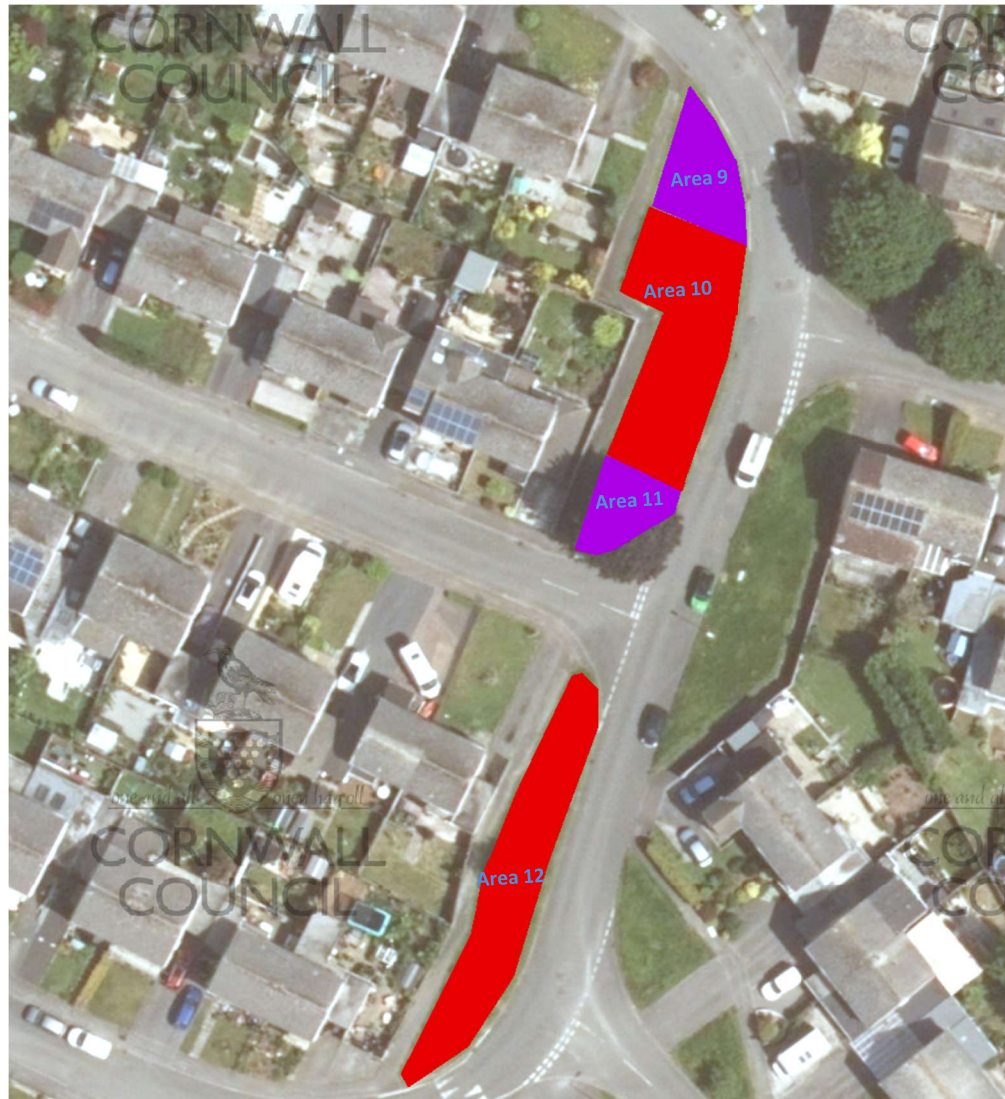
Area 6 -
Covering an area approx. 40 square metres

Area 7 -
Covering an area approx. 168 square metres

Area 8 -
Covering an area approx. 220 square metres

Areas 5 & 7 -
Cut and remove arisings during the autumn
Scarify the area to remove thatch creating bare ground
Overseed the area with wildflower seed
Cut the area again to maintain a short grass sward

Areas 4, 6 & 8 -
Cut and remove arisings during the autumn
Scarify the area to remove thatch creating bare ground
Overseed the area with shade loving wildflower seed or spring bulb mix



Specification

Dennis Rd (Samuel Bone Close)

- Keep a 50cm edge around the verge
- Clear vegetation back to the footway edge

Area 9 -
Covering an area of approx. 73 square metres

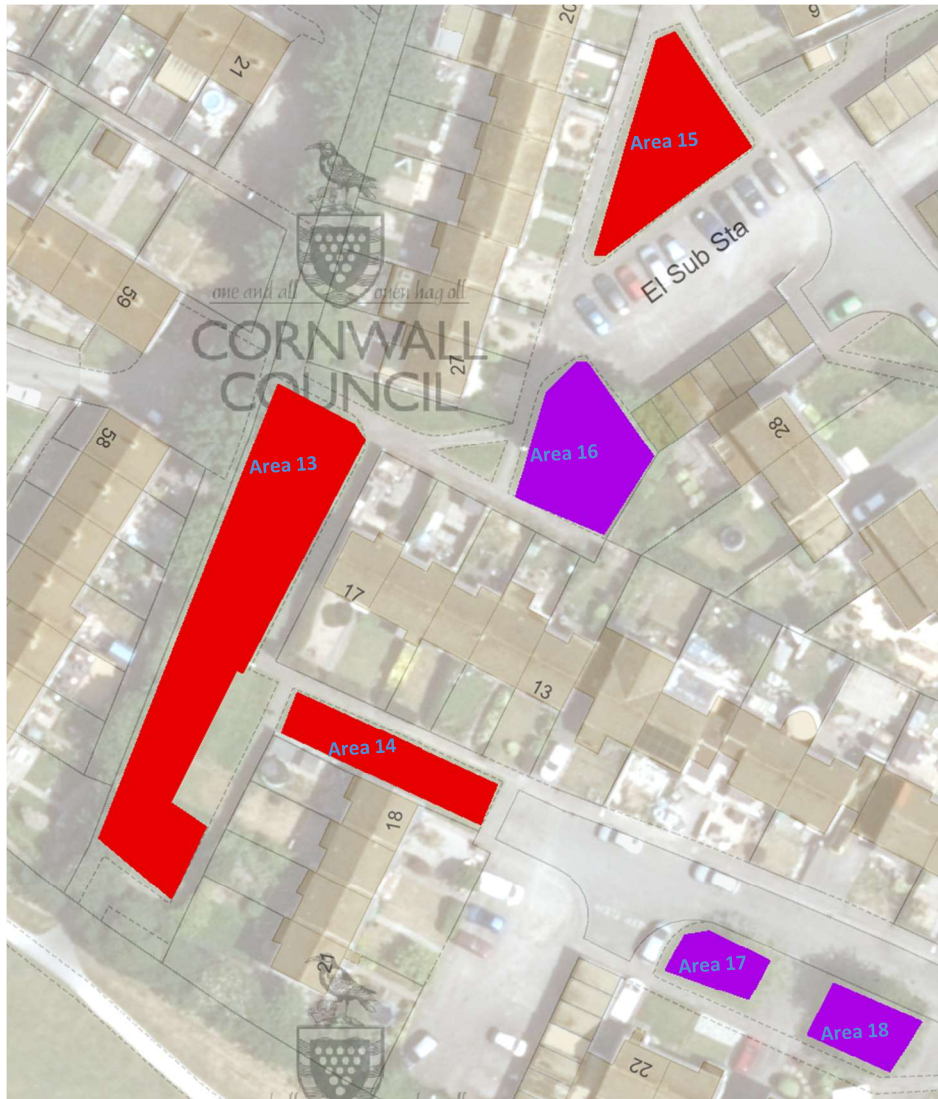
Area 10 -
Covering an area approx. 222 square metres

Area 11 -
Covering an area approx. 52 square metres

Area 12 -
Covering an area approx. 220 square metres

Areas 10 & 12 -
Cut and remove arisings during the autumn
Scarify the area to remove thatch creating bare ground
Overseed the area with wildflower seed
Cut the area again to maintain a short grass sward

Areas 9 & 11 -
Cut and remove arisings during the autumn
Scarify the area to remove thatch creating bare ground
Overseed the area with shade loving wildflower seed or spring bulb mix



Specification

Dennis Rd (nr Liskeard Park)

- Keep a 50cm edge around the verge
- Clear vegetation back to the footway edge

Area 13 -

Covering an area of approx. 424 square metres

Area 14 -

Covering an area approx. 98 square metres

Area 15 -

Covering an area approx. 162 square metres

Area 16 -

Covering an area approx. 148 square metres

Area 17 -

Covering an area approx. 44 square metres

Area 18 -

Covering an area approx. 56 square metres

Areas 13, 14 & 15 -

Cut and remove arisings during the autumn

Scarify the area to remove thatch creating bare ground

Overseed the area with wildflower seed

Cut the area again to maintain a short grass sward

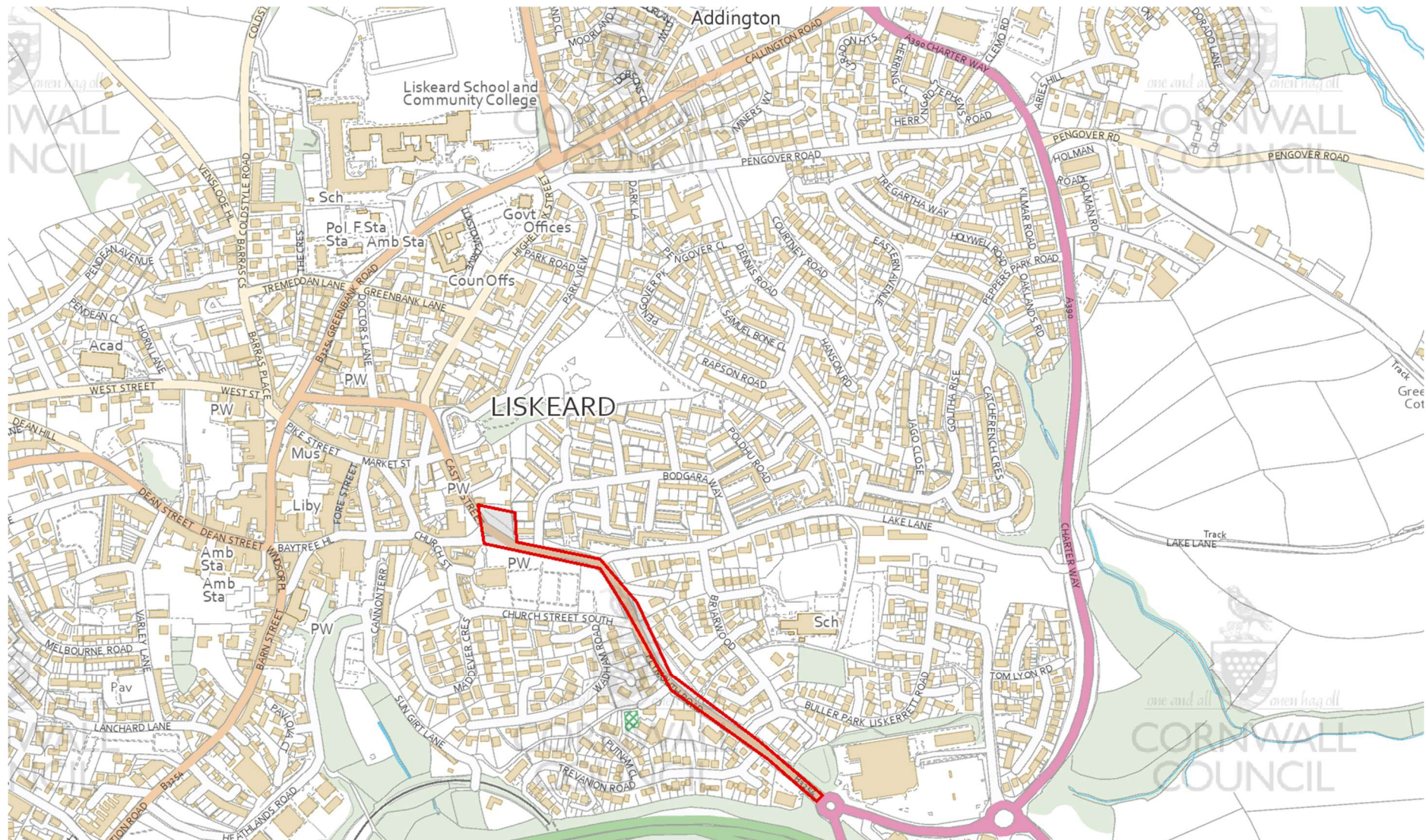
Areas 16, 17 & 18 -

Cut and remove arisings during the autumn

Scarify the area to remove thatch creating bare ground

Overseed the area with shade loving wildflower seed or spring bulb mix

Verge location plan for Plymouth Rd - Liskeard



Verge location plan for Pengover Estate - Liskeard

