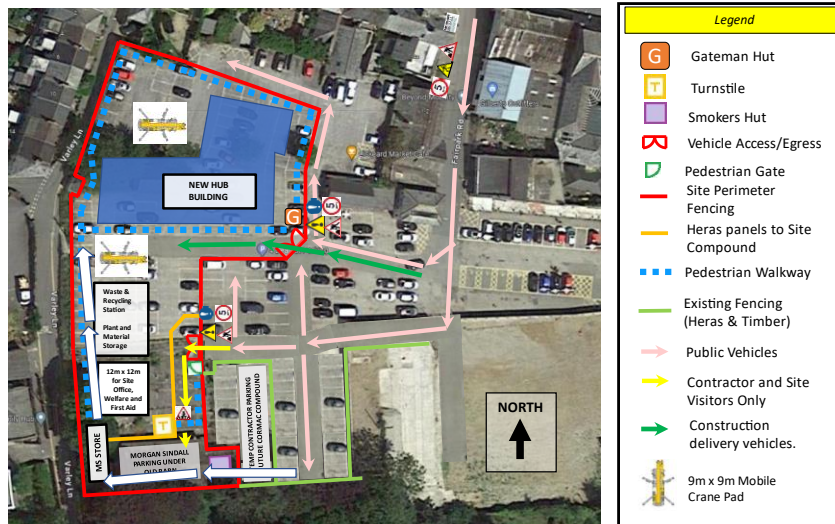


7. POSSIBLE PRESENTATION CORNWALL COUNCIL – INTEGRATED SERVICES HUB – CONSTRUCTION PROGRAMME – CATTLE MARKET – VARLEY LANE ACCESS – Recommendation: to receive the presentation and consider the motion in the context of update: Councillor R Brooks – Motion: - “In response to concerns from residents, Liskeard Town Council makes representations to Cornwall Council to enable safe access through the Cattle Market car park to Varley Lane during the construction of the Integrated Services Hub and to ensure improved access following completion of the build”.

Background – Guidance has been sought from Cornwall Council following public interest (further down in the report) in the impact of the construction of the Integrated Services Hub on the former cattle market and car park site and in particular the impact of access from the site onto Varley Lane and the impact on the Liskerrett Centre. (attached pdf 7.a. Cornwall Council – Liskeard Cattle Market – this includes slide 6 – possible options which is in the report below). It is hoped that there will be verbal update at the Council regarding the discussion of the options.

**67CB02 – Liskeard Integrated Services Hub
Logistics & Traffic Management Plan**

Classification: CONFIDENTIAL



Revision: 06	Reviewing Month: February 2024	Update Comments: 27.02.24 – Revised Site Boundaries	Sign Off:
--------------	--------------------------------	---	-----------

Strategic Context – The Neighbourhood Plan took 4 years 2014 – 2018 to prepare and is intended to direct development until 2030. The plan was developed in consultation with the community and members of public. There was a 91% support at the referendum. Some of the clear messages being:

Brownfield Sites (such as, the former cattle market) to be redeveloped to reduce the number of green field sites taken for development and to avoid abandoned accessible brown field sites in the town centre.

Services (such as, the Doctors Surgery) need to be provided to keep pace with the increased numbers of houses.

The Town Council when consulted by Cornwall Council on its property portfolio in the town has asked for as many Cornwall Council services and jobs to be retained in the town as possible. To help the public access services and provide jobs and footfall to the Town Centre.

Cornwall Council – Initial Response

Thank you for your email. We appreciate your comments and have listened to the concerns raised by the local community and are looking at potential options available to provide safe pedestrian access from the Cattle Market Car Park to the Liskerrett Centre and the Family Hub. These options take time to evaluate and implement, but once we have more information we will respond further to you.

Cornwall Council – Planning Stages Public Facing Consultation

This is a list of the meetings and consultation opportunities that members of the public and Town Councillors had in the run up and during the planning stages of this development. Public meetings/in person events

May 2022 – Briefing to Liskeard Town Council (All Town Councillors invited - meeting recorded for those unable to attend)

November 2022 - Public Consultation – Let's Talk Cornwall website

23 November 2022 – Update briefing to Liskeard Town Council (all Town Councillors invited – meeting recorded for those unable to attend)

2nd December 2022 - Full Planning Application submitted PA22/10699. 30 Public Comments submitted.

16th January 2023 – Public drop in session (to review and comment on plans for the Integrated Service Hub and find out about wider Cattle Market plans – held at Liskeard Public Hall).

17th January 2023 – Liskeard Town Council Planning Committee – Liskeard Public Hall.

12th June 2023 – East Cornwall Planning Committee: Public able to watch online or in person and register to speak - Chy Trevail, Bodmin.

28th October 2023 –WorkShed opening event at Liskeard Prime Stock Show, Cattle Market plans displayed and CC Officers present to answer questions.

15th November 2023 – Public drop in session (opportunity to find out more about the future of Luxstowe House and the proposed new service hub which will be based in the Cattle Market in Liskeard) – held at Luxstowe House.

E-mails received by the Town Council (Town Clerk directly) from members of the public, residents and businesses.

1. Lois Taylor – Dance Centered CIC – 21st July 2024

Hello - Liskerrett Centre and residents on Varley Lane, notifying them that the ramp connecting the Cattle Market Car Park with Varley Lane is planned to be closed for approximately 60 weeks.

This is not acceptable in multiple ways and I urge you to be part of ensuring this does not proceed.

As I am sure you are aware The Liskerrett Community Centre serves our community tirelessly and innovatively, ensuring that many of our more vulnerable community members and others have access to support services and activities that ensure a sense of community and connection and help their physical and mental health. Many of these people feel the sessions they attend at the Liskerrett are an essential part of their ability to cope with life, and they will not be able to make the walk by road from the car park. Supporting this planning permission will cut the life blood from many peoples lives, please ensure me you are not willing to let this happen.

I speak from my experience, I am co director of Dance Centred, www.dancecentred.co.uk We rent an office and hall space at Liskerrett, We are Liskeards key artist led company, recognised across the county for our work. We run a range of dance activity and bring in significant funding. Recently we were offered a 3 year funding bid by The National Lottery Reaching Communities to support women affected by cancer, funding from Postcode Local to support core costs and from FEAST Cornwall for a community intergenerational dance project and from for Dance Together for adults with physical and mental health conditions preventing them from taking part in other opportunities, we also run a weekly session for Shallal for adults with learning support needs. We employ local administrators, dancers, designers, printers, accountants and bring an average of 60 people a week into town for activities.

People call our session " life Saving", "better than pills", "activity that should be on the NHS," " essential to surviving". We know for a fact that these people will be excluded from engaging with our work as a result of this plan.

I could go on and on, I and those others who make their offer at the Liskerrett Centre work so hard to make Liskeard a positive place to be. I would also like to register my anger (not normally angry person) that we were not informed as a business working at Liskerret, this is our lively hood, Please don't let this happen.

Finally I was one of a small group who attended the research meetings for this development, we gave our knowledge and experience for free, but always were led to believe that a new space for the Liskerrett Centre was part of the plan, we feel shafted, I have tried not to get involved in recriminations and conversations about the Cattle Market Space but this has tipped me and we will fight it and I hope we have your support to find a positive solution for all.

Best wishes

Lois Taylor - Co Director Dance Centred CIC

2. Robert Wade – Stroke Club – 23rd July 2024

Subject: OLD CATTLE MARKET - ACCESS TO LISKERRETT CENTRE

I am writing on behalf of the Liskeard First Steps Stoke Club to complain re the closer of the ramp access to Varley Lane during the building of new council offices.

We provide a weekly meeting place for people who have survived strokes. Their mobility is varied, from wheel chairs, frames and also unaided but restricted in the distance they can cover. The members include people who live in Dobwalls, Menheniot, Pensilva, Callington, Polperro and Liskeard. Most of them use cars to reach the Liskerrett Centre. Because of the limited parking in the centre they have to use the Cattle Market Carpark.

The closure of the ramp access to Varley Lane would cause some of our members to stop coming as they would not be able to cover the distance via the main road and then up the hill in Varley Lane.

I therefore ask that you would find a way of not closing the ramp access or providing another pathway from the carpark to Varley lane adjacent to the Liskerrett Centre.

Regards

Robert Wade

Volunteer Organizer, First Steps Stoke Club

3. Cheryl Masefield – 23rd July 2024.

Subject: Closure of ramp to Varley Lane

I am writing to express my outrage at the closure of the the ramp from the market carpark to Varkey Lane. This is a pedestrian access which is used constantly by residents and visitors to Liskeard. It is the only safe way to get from the carpark to Varley Lane and The Liskerret Centre.

The Liskerret Centre is an extremely valuable resource for Liskeard. It is an amazing place which provides a wealth of different activities, classes, meeting places and events for a wide variety of people in the area. It is unique it what it us able to provide our community.

If the ramp is closed, access will be extremely difficult and dangerous and people will be reluctant to use it. Liskeard cannot afford to lose this wonderful resource.

I do hope that we have your full support in resolving this problem now! It needs to be sorted before the building work really starts.

I look forward to hearing from you soon and I hope you will be at the meeting on Friday.

Yours faithfully

Cheryl Masefield – Darite, Liskeard

4. Dawn Bargent-Gotch – 24th July 2024

Dear sirs - I find I have to write to yourselves to express my concerns for the closure of the pedestrian access to Varley Lane.

My husband and I use Liskerett centre at least twice a week.

We have always parked in the cattle market and walked the short distance via the pedestrian slope to Liskerett centre.

We turned up on Tuesday to find this access had been blocked without any prior notification. My husband is registered disabled and I am his carer. We had to find alternative parking via the Co-op car park which as you can imagine was being used by hoards of additional drivers looking for space all being caught unaware like ourselves of the market way closure.

We couldn't find a disabled spot and had to park miles away from where we needed to be.

My husband who has mobility issues and walks with sticks had to walk a fair distance through the car park to cut through across a busy road of traffic and walk up Varley Lane. Which apart from being an uphill struggle has no pavements for safe pedestrian access barely room for a car let alone foot soldiers.

60 weeks is totally an unacceptable amount of time to have no pedestrian access (and we all know how council projects always run over) and I am now led to believe the plans are that this access is never going to be replaced even once your exorbitant new build hub opens.

Liskerett Centre has numerous classes and businesses running out of it daily every week and it runs several event evenings and community projects throughout the year. It also runs clinics for eye and ear health and also driver awareness courses. Not to mention the valiant efforts during COVID...how soon our council forget the centre's usefulness then.

All these businesses are enhanced by the easily accessible cafeteria which in my personal experience is the best cafeteria in the town. Catering for a healthy vegetarian option all prepared and cooked freshly on the premises. This closure will greatly affect their revenue.

I also attend a dance class weekly which is my only respite for an hour a week from my husband's care. Not only is it good for my physical health but my wellbeing too.

Lois my dance instructor has several classes each week and even devotes classes for care in the community for our more vulnerable members.

It would be a complete travesty if this were to close due to accessibility issues.

Lois is more than a dance instructor to myself she is a trusted friend after all these years and I know without her weekly classes my life would be a little less bearable.

I can see that little thought has been placed upon the services held within one small Community Centre and I urge you to put in place some form of access to get us over this substantial period of time and to consider the effect on lives and businesses if you do not.

Before commencing with your building project you should have paid more attention to the people of the local community that uses this access on a daily basis. Day in day out, week in week out, year in year out.

I look forward to hearing a response from yourselves.

Yours Sincerely

Mrs Dawn Bargent-Gotch

5. Joss Barnhard 25th July 2024

Good afternoon,

The following has been sent to cllrs. Jane Pascoe, Sharon Daw and Nick Craker and we thought it might be a good idea to copy it to you too. Sorry it goes on a bit but this is so important to so many people.

I am writing to you all to try and ensure that pedestrian access from the rear of the Old Cattle Market car park in Liskeard on to Varley Lane is not permanently closed.

The current closure for at least 60 weeks is going to cause huge problems but rumour has it that Cornwall Council has no plans to either re-open access to the current ramp or to install a replacement ramp or steps with handrail.

This vital access is the main route for the majority of people using Liskerrett Community Centre on Varley Lane and the list of support groups they go there for makes it blindingly obvious that the alternative of parking in Westbourne car park and walking from there is almost impossible for many. Varley Lane is steep, narrow and unsafe for pedestrians having no pavement and a constant flow of traffic, difficult enough for those able to hop out of the way of impatient drivers, out of the question for many people using these groups:

Breathers/Macular Support/Learning Difficulties/Stroke Support/Mental Health Support/Disabled Youth

Liskerrett is truly a community centre, home to several small businesses, many of whose customers are elderly like me, or frail, disabled or very young. The Hub café

in particular is a meeting place for many who find their only human contact there. In short, Liskerrett is an essential, affordable, facility serving a large part of the Liskeard community and without the access from Cattle Market car park, it may very well become unviable and have to close.

There is no other place in central Liskeard where most of these groups and businesses could move to and while appreciating that Cornwall Council needs a new hub, those of us who will be affected by this closure cannot understand why it has to be built at such a cost to so many of the vulnerable residents of Liskeard.

This closure will also be detrimental to the pre-school and nursery adjacent to Liskerrett Centre as those attending are far too young to walk from Westbourne car park.

We'll copy this to our newly elected MP in the hope that she will contact the council on our behalf.

Joss Barnard

And 25 elderly members of a weekly dance class

6. Pat Bates 26th July 2024

Dear Sir,

I am writing to speak up for the hard working people at Liskerret Centre and the closing of the ramp at the top of the cattle market car park. Now this ramp is closed it will mean dozens of people will be trying to navigate the Varley lane, on foot, with cars trying to pass on a very narrow road. Liskerret is probably the busiest venue in Liskeard and it will KILL their events. I realise this is a County Council decision but I feel the local town council should be fighting this all the way before Liskeard loses yet more facilities, including many car park spaces!!

Hopefully someone will be at the meeting tonight .

Concerned local resident since 1945

Pat Bates

7. Sue and Keith Howdle 27th July 2024

Subject: Closure of pedestrian access

We are writing to protest in the strongest possible terms about the closure of pedestrian access between the cattle market car park and Liskerret Community centre. The reason it is called a community centre is because it provides the people of Liskeard, of all ages, with over 30 groups for health, both physical and mental, social inclusion, exercise and dance, entertainment, art, cooking, repair, and craft and many others including the wonderful vegetarian cafe. Many of the people who attend are of limited mobility or have young children or are elderly and navigating the very narrow Varley Lane is at best difficult and at worst really dangerous. Further,

more there are now virtually no parking spaces in this car park for people arriving in cars. This also limits the access of the residents in Varley Lane and surrounding properties to Liskeard town. Surely this must be contrary to the law of the land on the grounds of equality and social inclusion.

Before any work starts on the Integrated hub, access needs to be implemented immediately as a matter of urgency. Also after attending the Public Meeting last evening we heard SWW was intending to close Varley Lane for repairs. This is beyond belief. This would mean most of these groups could not function. Where is the community spirit and compassion in this decision. Do we really want Liskeard town to die because that is what will happen if you don't act now.

Sue and Keith Howdle

8. Rachel Brooks 27th July 2024

Dear Philip Jones,

I am a Liskeard Town Councillor but writing in a personal capacity as the Town Council has not yet had the opportunity to discuss this issue. I am also a regular user of the Liskerrett Centre, where I attend knit and natter and tai chi.

I attended the public meeting on this issue at Liskerrett last night and it was very good to see Councillor Jane Pascoe, an officer from parking and a representative of Anna Gelderd MP there. At the packed meeting we heard from a long list of local residents and Liskerrett users about the impact of cutting off access between the cattle market car park and Varley Lane. A very large number of people will now have no safe way to move between the town centre and their homes or sessions at the centre which are vital to health, wellbeing and sense of community. Those who are elderly, have disabilities or young children will be disproportionately affected. I know a number of people who come to knit and natter and tai chi who simply will no longer be able to attend. Although these may seem like optional leisure activities, in reality they offer a lifeline to many people who, for example have been bereaved or are battling to maintain their health. There was also considerable unhappiness about the lack of notice, let alone consultation, for residents.

As well as the impact on all of these individuals, the closure of access threatens the viability of the community and arts centre itself as hirers will move to more accessible locations when many of their participants can no longer attend. This would be huge blow to Liskeard as a whole, and it was very moving last night to hear the testimony of so many people who get so much out of being able to participate in the centre.

A number of people at the meeting raised the possibility of legal action as there has been access there for as long as anyone can remember and it is marked on maps as a byway.

I hope you'll agree that it shouldn't have to come to that. It was good to hear from Sally Hawken at the meeting that Cornwall Council have now, finally, started a dialogue about possible options to enable access while the works are going on. I

would urge you to follow this up urgently and to find a solution which gives meaningful access during this time and improved access once the new building is complete. Despite the orderly conduct of last night's meeting, it's clear that there is a good deal of public anger about what has happened so far and a large number of local people will be watching carefully to make sure this is resolved in a satisfactory way.

I have proposed a motion for the next meeting of Liskeard Town Council on 6 August which calls on the Town Council to make representations to Cornwall Council to ensure safe access during the build and improved access thereafter. I very much hope that, by that time, it will be unnecessary because a practical solution will be in place. A lot of people locally will not let it rest until this happens.

Best wishes,

Rachel Brooks

9. Katherine Revell 27th July 2024

I'm sure you will have had countless other letters from angry residents and users of the Liskerrett Community Centre about your ill thought through and possibly illegal closure of the pedestrian access from Market carpark to Varley Lane. I am sure you will have heard countless accounts of how thoughtless and reckless this decision is in terms of health and safety, because the only option is to use the steep, narrow, unlit, busy road that is Varley Lane. I am sure you have heard numerous sad stories of how lives will be impoverished through not being able to access the services and the unique, caring environment that the community centre has taken years to nurture. I can add my voice to theirs as I run Tai chi and Somatics classes at the Liskerrett and I know many of my students will struggle to come if there is no access through the carpark.

It is not good enough to say that the closure is temporary – a place like the Liskerrett, running on a shoe string, can wither and die within the space of a few months if it's too difficult to access. Plus it's reasonable to expect that the building development may well take a lot longer than 15 months. What a severe loss that would be! It's the very heart of the community! It has the best vegetarian café in the whole of south east Cornwall! Some people at the public meeting last night even felt it might be a deliberate move on the part of the council to close the Liskerrett by cutting off its life line. I wouldn't go that far – for me it's just a matter of incompetence. But it is an indication of how little trust there is in the integrity of the council.

So please, with immediate effect, put this right. Remove the barricades and halt all further progress on making the barriers higher. Make a pedestrian route that is usable. This is a priority. Consult with people – there are so many ideas of how it could work if you would only listen!

Kind Regards

Kath Revell

Resident of Dean Street and workshop leader at the Liskerrett

10. Jo Wiltshire – 28th July 2024

Dear Philip ,

I am writing to express my concern at the closure of this access and the negative impact this will have . As you are aware there was a public meeting on Friday and many concerns were raised . I am someone who regularly uses the community centre on Varley lane . From my perspective the closure of this access is :-

Discriminatory (Possibly falling under the 2010 Equality act)

- people who live in the houses around Varley lane / Thorn Terrace are now struggling to get into Liskeard as they are unable to go down Varley lane . Apparently there is one resident who is over 90 + years old who is now house bound due to the loss of access . It is my understanding that access of all types is covered by the equality act .

- People wishing to attend the Liskerrett community centre who have physical or Mental health disabilities will struggle or it will be impossible for them to attend . In the group I attend there are already people who are unable to access the group as they have mobility issues and cannot walk up Varley lane . At the public meeting a man shared that he has COPD (a life limiting breathing issue) and he and others may not be able to attend the Breathers group as they will not be able to access the community centre via Varley lane . There are also groups for people with MH issues and many will struggle with Anxiety and depression . Although on paper it is only a short walk up Varley lane if you struggle with MH issues this can feel impossible . There are many groups that go on in the Community centre and evidence clearly shows the importance of social activities for peoples health and wellbeing . Closing off the pedestrian access thus I feel is discriminatory.

Health and Safety :-

I am uncertain where you live or if you are aware of Varley lane . It is a Narrow lane , a cars width , there is 2 way traffic , there is an incline , no lighting , no pavement and at the public meeting stories were shared about the risk and potential injury or worse . By closing the entrance the foot fall on this dangerous lane has increased significantly . In addition the family centre is on the land of the Community centre so more parents with buggies and young children will be walking up the lane which only will increase the risk.

Reputational harm to Cornwall county council :-

I am uncertain what media coverage is happening about this , but I doubt Cornwall county council want to be in the spotlight for closing an access which for at least one person if not more means they are now house bound , and other people such as someone with a life limiting illness can not access and support group that is a life line for them.

Closing and established by way :-

My parents moved to Liskeard in 1964 and I grew up in Liskeard , I have used that access since I was a small child for general walks around town and going to the play park nearby . The building in Varley lane was a school previously and I have spoken to someone who remembers walking his children to school through this access from the cattle market car park over 40 years ago.

In addition there is a small but very popular vegetarian restaurant in the Liskerret centre and this closure could have a significant negative impact on her business.

I do hope that you are able to find a way forward and open this Pedestrian access

Thank you

Jo Wiltshire

11. Clare Warner Subject: Valley Lane access 29th July 2024

“Dear who it may concern

I am emailing to express my concern over the closure of the pedestrian ramp giving access to Varley Lane in Liskeard.



In my opinion the closure of this ramp has not been thought out at all. The alternative route is not safe. The picture attached was taken this morning whilst I walked up Varkey Lane with my newborn baby in his pram, on our way to breastfeeding support group. You can see in the photo another woman just ahead, also on her way to the

same group as me. The lane is not wide enough for pedestrians as well as constant traffic. This group runs every Monday and is a busy group, not to mention the other busy weekly groups at the family centre. Every member of the public attending this support centre is now at risk along the dangerous road with no pavement.

Surely a safer route could have been thought out? It seems like an accident waiting to happen. A senseless decision from Cornwall Council.

Kind regards

Claire Warner

12. Gerald Hillman 29th July 2024

Subject: Closure of ramp access, cattle market

Dear Town Clerk,

I'm writing to express my deep concern over the closure of the pedestrian ramp from the cattle market car park to the Liskerrett Centre during the construction of the Integrated Hub. This centre is a very important community asset and delivers a wide range of activities for people in Liskeard and the area around. A substantial number of these people have mobility issues and will find the long walk to the centre daunting if the Cattle Market car park is rendered unusable for Liskerrett users because of the access closure. The cattle market car park is adjacent to Liskerrett and its direct access via the ramp into Varley Lane is the principal lifeline for a large number of those that regularly use the Liskerrett Centre. Access via Varley Lane, up from the main road and the other principal town car park is not a safe, viable alternative.

A significant number of activities for young and old in the centre are funded by grants whose primary purpose is to support community cohesion and inclusion for vulnerable groups, youth groups, etc. If support for these activities falls away then a valuable part of the function of this centre will be lost and its viability overall will be compromised. Cornwall Council has given little useful notice to Liskerrett or the community at large that this closure is about to happen, and that the access closure is set to last for over one year! (The builders said up to 2 years.)

Some way should be found to keep a direct access to the centre from the cattle market car park. From the other town centre car parks the alternative access is via Varley Lane. This is barely wide enough for a single car with wing mirrors almost touching the high walls of both sides of this alleyway for 100 yards. There's no room for a footpath. Vulnerable groups who have mobility issues and older groups who are no longer fleet of foot will be at serious risk if they attempt to use this route. The only other access is from Station Road, up the hill to Varley Lane, but there is no reasonable parking available from this end of the lane and that route, too, is not an option.

Such groups will therefore be effectively shut out of activities at Liskerrett and their provision will progressively deteriorate towards collapse.

This decision has the hallmarks of a failure by the County Council to recognise the importance of a sense of community. The centre, resident and visiting companies and organisations runs activities like Mothers and Toddlers, Knit and Natter, Dance Together (chair-based movement), Let's Dance - (2 classes in order to accommodate demand from older dancers), martial arts Aikido, Qui Gong and Tai Chi, a singers group, the Breathers group (long term breathing difficulties like COPD), a group which supports victims of strokes, another which supports those with diabetes, Shallal (another dance-led group for vulnerable adults and those with learning difficulties,) regular art classes and others. Liskerrett also promotes theatre and dance events staged by outside companies and is a member of the Carn to Cove arts initiative, plus having a monthly film club (Liskeard has no cinema). It also has a vegetarian cafe.

At the meeting of over 100 concerned citizens held on the 26th July I asked how many people used Liskerrett and the answer was that there are 3,400 user interactions per month or 850 per week - many coming to professionally delivered events and classes in dance to support groups like those with poor health issues, all of which adds hugely to a sense of community cohesion.

To casually undermine this important community asset by strangling its access, as Cornwall Council is proposing, is nothing short of an act of social vandalism, and runs counter to the Council's own stated policies on community support, and support for those with vulnerabilities or health impairments. Liskerrett is a vital pillar of support to the overall community.

The community gets a huge 'Bang for its buck' from such places, but because they operate effectively outside the big 'politically-funded initiatives' their contribution, like that of the nation's carers, is ignored politically and economically - that is, until it goes. Then there is uproar - as has recently happened nationally and for which the then-Tory government has paid a very high price at the recent General Election.

Towns like Liskeard, up and down the country, are falling into a state of social despair through lack of 'ground-upwards' energy and initiatives. But such initiatives, like Liskerrett, require effective political support - not to be elbowed out of the way by poorly implemented planning of other developments.

If the pedestrian access to the Liskerrett Centre is not maintained, then many of its functions will be physically blocked and wither away. Its role in providing one of the necessary corners of holistic support within the town, ever more needed in these socially demoralised times, will be lost.

People will think that even their local government is failing to recognise that we, as humans, all depend on living within the embrace of healthy and sustainable communities. They will hold the Council to account for this in future.

The residents on this side of town also depend on this access to safely get across town and for children to get to school. Older residents of Liskeard clearly remember access via the cattle market being there 60 years ago and it is marked on much older maps of the town as a clear byway. It is not legal to close such byways unless an alternative is provided which does the job. Varley Lane is not a safe alternative.

The cattle market site is large and it seems entirely possible to provide a small pedestrian corridor around the edge of the site, within the present curtilage, which would enable using a ramp onto part of Varley Lane as before. This, I would suggest, is a legal obligation, and the town should be prepared to challenge Cornwall Council on this point.

An alternative route around the edge needs to be found before the builders dig the holes to erect their safety screens entirely blocking passage via the site.

It is all very well saying the town was consulted. When such a development was proposed it wasn't expected that closure of this important access would be necessary, nor for such a huge length of time. The consequent loss of Liskerrett would be another nail in the deteriorating fabric of the town.

The point was made (on the 26th July meeting) that in Plymouth there were huge and lengthy works along New George Street with large mechanical plant - diggers, cranes, etc. In spite of huge works both sides of the street were kept open with suitable boarding erected for safety. If they could do it, then one reasonably expects Cornwall Council to also be able to keep a corridor open.

The proposed works in the cattle market are no bigger, and the site is three times wider. It appears to many that the decision to close off the whole site was done more for easy convenience on the part of the authorities, and that those in charge of planning this undertaking were ignorant of the consequences it would have for the town.

I hope you will use your good offices to secure some sort of continued safe and user-friendly access to the Liskerrett Centre from suitably located parking. It is a vital part of community provision for Liskeard in these increasingly threadbare times.

Having been a county councillor myself in the 1990's I know that individually one's voice can be effective, but it will be even stronger when combined with that of other local colleagues in Liskeard and the surrounding areas. If you all support the retention of safe and direct access to Liskerrett it will be more effective in sustaining this valuable part of the social infrastructure in Liskeard.

Thank you,

Yours sincerely,

Gerry Hillman

13. Mark Freeman 29th July 2024

I'm going to keep this short. Blocking access to the Liskerrett centre is at best an oversight, at worse an underhand method of usurping popular hub for local activities and services. The centre is not just a building, it is a community. Those who felt it was more appropriate to spend our money on a new centre, when there was ample opportunity to see that a grant and support for what already exists would be far cheaper and more popular, are not representing the community, they are representing their own self interest and or self importance. My elderly mother made an excellent point today when she mentioned that when it rains she will be less likely to attend activities because of various reasons as she'd have to walk further, and that once you stop going to something it's much harder to regain the momentum. The actions of some are killing a service that needs support not replacement, it is frankly disgusting how incompetent or corrupt individuals are causing yet more issues for this town by providing "help" no one asked for.

Regards

Mark Freeman

14. Tamsin Field – 31st July 2024

Dear Sirs and Madams,

I am writing with a personal concern regarding the Varley lane ramp being closed.

Myself and my young family have lived in Liskeard for nearly 10 years and we love it!

In October 2018 my husband fell ill. He suddenly collapsed. He has unfortunately got progressively worse and now has chronic pain in his legs (Central Sensitisation Syndrome), try say that one fast 10 times, ha ha anyway, and he has a balance disorder, which means he can't walk due to pain and the possibility of falling with his instability. He has now become dependent on a wheelchair and mobility Scooter. He lost all his confidence in going out, as he had been house bound since before COVID. We have worked really hard on building up his mental health and finally managed to get him having a go on his mobility scooter. Well, we found that it didn't have enough power to go up Varley lane from Melbourne road, but he could go down past the Bowling Green and get into station road... Just! He managed to get into town, but still felt rather nervous and embarrassed. I suggest to go into Stewart House garden, as it is accessible and secluded. He loved every minute of it. On our way home, we went through Cattle Market car Park and down the ramp to Varley lane and the down to Melbourne Road. It was wonderful seeing him get more and more excited to go out. We have two young girls that we home school (so they use the slop often during the day and their safety is a concern too, not having a safe access into and from town) and I am my husband's full time carer, so we are a very

close family, so for the girls to go out into town with their father was such an emotional time.

Well, now the ramp is gone, that's it... My husband can get out, but can't get back home on his mobility scooter! Either end of Varley lane is too steep for it... Saying that, a Motorised Wheelchair is on order for him and will take about six weeks for delivery, so that's another Summer we can't go around locally as a family. Then when he gets the chair, it will be powerful enough to get up and down, but then there is the safety aspect. A family of 4, obviously one in a wheelchair using The narrow Varley lane is not ideal.

Please would this matter kindly be looked into. I know it has been a huge concern to a lot of people on my street alone.

I did attend the meeting last Friday and the Liskerret Centre and aired my views with them.

Thank you for reading me rather long email, but I just hope I got me families position across as to how important it is to have this access open again.

Just to add... I was unaware of the closure until I saw the notice attached to the ramp on the Thursday before said closure on the Monday, so it was a very upsetting shock for us all.

Kindest Regards,

Tamsin Field,

Melbourne road resident.